

# FOUNDATION RECOGNITION

The Rotary Foundation offers a number of opportunities to show its appreciation to individuals for supporting our grants and programs.

\*In [My Rotary](#), you can view your Donor History Report, which includes your personal contribution history and recognition summary. You can also request this report by emailing [rotarysupportcenter@rotary.org](mailto:rotarysupportcenter@rotary.org).

## INDIVIDUAL RECOGNITION

### Rotary Foundation Sustaining Member

A Rotary Foundation Sustaining Member personally contributes \$100 or more each Rotary year to the Annual Fund. These contributions count toward Paul Harris Fellow, Multiple Paul Harris Fellow, Paul Harris Society, Major Donor, and club recognition banners. Use the Sustaining Member badge stickers to recognize these donors in your club.



### Paul Harris Fellow

Paul Harris Fellow recognition is given in appreciation to anyone who contributes (or in whose name is contributed using Foundation recognition points) a gift of \$1,000 or more cumulatively to the Annual Fund, PolioPlus Fund, or an approved global grant. Recognition consists of a certificate and pin. Optional recognition items include a medallion for \$15 and a complimentary certificate cover.



## Certificate of Appreciation

Certificate of Appreciation recognition is given to honor a business or organization. Since Paul Harris Fellows are only for individuals, a donor may use their Foundation recognition points to award a business or organization a certificate of appreciation.



## Multiple Paul Harris Fellow

Multiple Paul Harris Fellow recognition is given at subsequent \$1,000 levels. Recognition consists of a pin set with additional stones corresponding to the recipient's recognition amount.



### PHF

Level	*Range	Pin
+1	\$2,000 to \$2,999	one sapphire
+2	\$3,000 to \$3,999	two sapphires
+3	\$4,000 to \$4,999	three sapphires
+4	\$5,000 to \$5,999	four sapphires
+5	\$6,000 to \$6,999	five sapphires
+6	\$7,000 to \$7,999	one ruby
+7	\$8,000 to \$8,999	two rubies
+8	\$9,000 to \$9,999	three rubies

\*Range can be a combination of cash contributions and Foundation recognition points received.

## Paul Harris Society

The Paul Harris Society recognizes individuals who choose to contribute \$1,000 or more each Rotary year to the Annual Fund, PolioPlus Fund, or an approved global grant. Paul Harris Society contributions count toward these recognition categories: Rotary Foundation Sustaining Member (Annual Fund contributions only),



Paul Harris Fellow, Multiple Paul Harris Fellow, Major Donor, and club recognition banners. Recognition consists of a chevron-style pin provided by your district Paul Harris Society coordinator.

## Major Donor

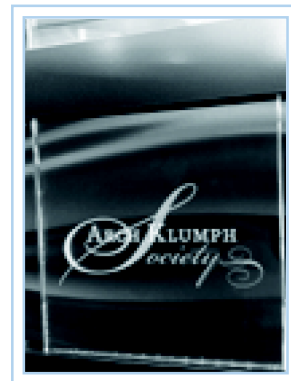
The Rotary Foundation recognizes individuals or couples whose combined giving has reached \$10,000, regardless of the gift designation. This recognition level can be achieved only through personal contributions and not through recognition points. Major Donors may elect to receive a crystal recognition piece and pin(s) commemorating the gift at each new recognition level.



Level	Range
1	\$10,000 to \$24,999
2	\$25,000 to \$49,999
3	\$50,000 to \$99,999
4	\$100,000 to \$249,999

## Arch Klumph Society

Donors who contribute \$250,000 or more become members of the Arch Klumph Society. Portraits, biographies, and, in some cases, video clips are housed in the digital Arch Klumph Gallery on the 17th floor of Rotary International World Headquarters; another digital gallery travels to Rotary events around the world. Members also receive lapel pins and pendants, signed certificates, and invitations to the society's exclusive events, held worldwide. New members are invited to a special induction ceremony at Rotary headquarters.



- Trustee Circle — \$250,000 to \$499,999
- Chair Circle — \$500,000 to \$999,999
- Foundation Circle — \$1 million to \$2,499,999
- Platinum Trustee Circle — \$2.5 million to \$4,999,999
- Platinum Chair Circle — \$5 million to \$9,999,999
- Platinum Foundation Circle — \$10 million and above

## Benefactor

A Benefactor is someone who informs The Rotary Foundation in writing that he or she has made a provision in his or her estate plan for the Foundation, or who makes an outright gift of \$1,000 or more to the Endowment Fund. Benefactors receive a certificate and insignia to be worn with a Rotary or Paul Harris Fellow pin.

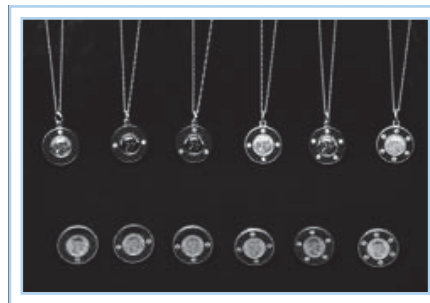


## Bequest Society

The Rotary Foundation recognizes couples or individuals who have made commitments in their estate plans totaling \$10,000 or more. Donors may elect to receive an engraved crystal recognition piece and a pin commemorating the commitment at each new recognition level.



Level	Range
1	\$10,000 to \$24,999
2	\$25,000 to \$49,999
3	\$50,000 to \$99,999
4	\$100,000 to \$249,999
5	\$250,000 to \$499,999
6	\$500,000 to \$999,999
7	\$1 million to \$2,499,999
8	\$2.5 million to \$4,999,999
9	\$5 million to \$9,999,999
10	\$10 million and above



## CLUB RECOGNITION

The Rotary Foundation offers a number of opportunities to show its appreciation to Rotary clubs for supporting its grants and programs.

The Banner Report displays a club's current Rotary year progress toward becoming an 100% Foundation Giving Club, 100% EREY Sustaining Member Club, and the Top Three Per Capita in Annual Fund Giving banner recognition. Banner recipients listed in this report may fluctuate throughout the Rotary year due to changes in membership and additional or redistributed contributions. Final certification is processed by The Rotary Foundation after the close of the Rotary year. Banners will be shipped to current district governors. Request the Banner Report at [rotarysupportcenter@rotary.org](mailto:rotarysupportcenter@rotary.org).

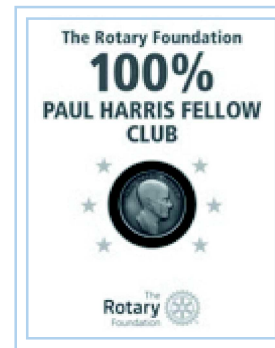
## 100% Foundation Giving

This banner is awarded to clubs that achieve an average of \$100 in per capita giving and 100 percent participation, with every active (dues-paying) member contributing some amount to any/all designations, including the Annual Fund, PolioPlus Fund, approved global grants, and the Endowment Fund, during the Rotary year. This annual banner recognition is awarded at the end of the Rotary year.



## 100% Paul Harris Fellow Club

To be eligible, every active (dues-paying) member of the club must be a Paul Harris Fellow at the time your district governor requests banner recognition. This banner recognition is a one-time-only award, but the intent is that the club will maintain its membership at the 100% Paul Harris Fellows level.



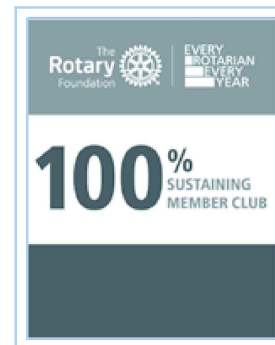
To obtain this recognition:

1. A club representative must contact the district governor after determining that all current, dues-paying club members are Paul Harris Fellows.
2. The district governor must confirm that all members are Paul Harris Fellows by using the Club Recognition Summary, and then notify The Rotary Foundation by email at [rotarysupportcenter@rotary.org](mailto:rotarysupportcenter@rotary.org).

The top of the Club Recognition Summary indicates if the club received the 100% Paul Harris Fellow Club banner along with the date this was achieved.

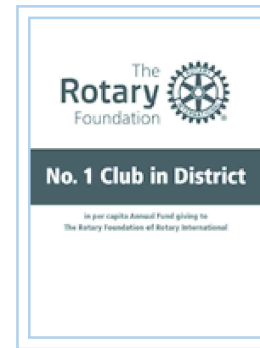
## 100% EREY Sustaining Club

Rotary clubs must achieve a \$100 per capita to the Annual Fund and every active (dues-paying) member must personally contribute \$100 or more to the Annual Fund during the Rotary year. This annual banner recognition is awarded at the conclusion of the Rotary year.



## Top Three Per Capita Clubs in Annual Fund Giving

Banners are given to the top three Annual Fund per capita giving clubs in each district. To be eligible, clubs must achieve a minimum of \$50 in per capita annual giving. This banner recognition is awarded at the conclusion of the Rotary year.



## 100% Paul Harris Society Club

This recognition is awarded to clubs in which every active (dues-paying) member has contributed a minimum of \$1,000 outright to the Annual Fund, PolioPlus Fund, or an approved global grant during a given Rotary year. This annual banner recognition is awarded at the conclusion of the Rotary year.



## FOUNDATION RECOGNITION POINTS

Foundation recognition points are awarded to donors who contribute to The Rotary Foundation through the Annual Fund, PolioPlus Fund, or an approved global grant. Donors receive one Foundation recognition point for every U.S. dollar contributed to these funds. Contributions to the Endowment Fund are not eligible.

Donors can extend Foundation recognition points to others to help them become, or to name them as, a Paul Harris Fellow or Multiple Paul Harris Fellow. Foundation recognition points belong to the original donor until the donor uses the points or until the donor's death at which time they expire (unless the donor is a Major Donor and then their points may be used by their surviving spouse).

Note: Foundation recognition points do not count toward Paul Harris Society and Major Donor recognition.

### Transfer rules

A minimum of 100 Foundation recognition points must be transferred at a time, and an authorizing signature is required when you complete the [Paul Harris Fellow Recognition Transfer Request Form](#).

Note: Foundation recognition points may not be transferred from individuals to a club or district. Donors no longer need to be a Paul Harris Fellow to receive recognition points.